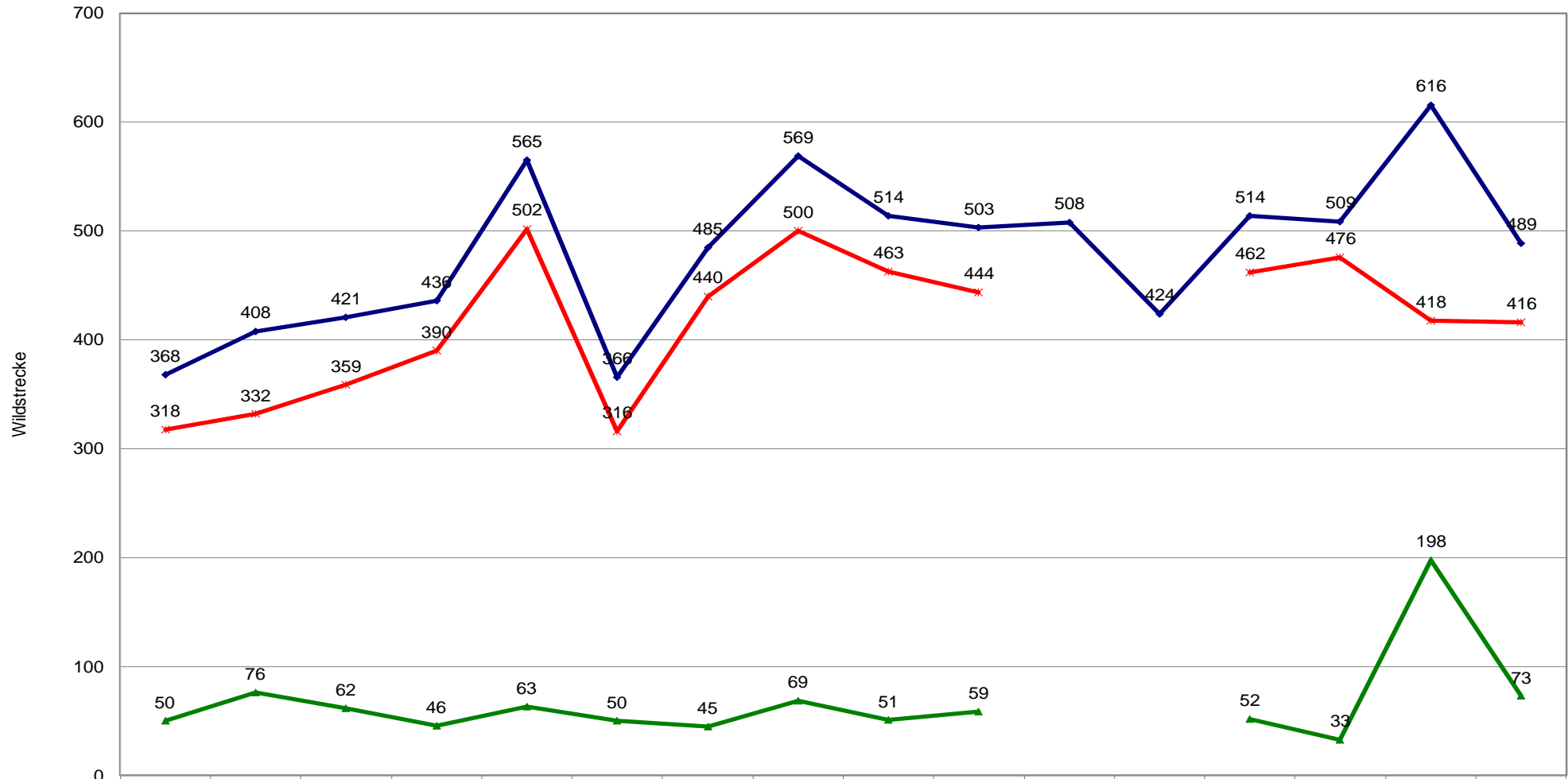


Rotwild 2023/2024

Hegeringe des KJV Güstrow e.V.	gesamt					Altersklassen weiblich						Altersklassen männlich									
	gesamt	weiblich		männlich		0	% am Abschuss weibl.	I	% am Abschuss weibl.	II	% am Abschuss weibl.	0	% am Abschuss männl.	I	% am Abschuss männl.	II	% am Abschuss männl.	III	% am Abschuss männl.	IV	% am Abschuss männl.
	Summe	Summe weibl. Abschuss	% am ges. Absch.	Summe männl. Abschuss	% am ges. Absch.																
Baumgarten	32	18	56%	14	44%	9	50%	7	39%	2	11%	5	36%	4	29%	1	7%	3	21%	1	7%
Am Schmooksberg	17	9	53%	8	47%	3	33%	3	33%	3	33%	1	13%	5	63%	1	13%	1	13%	0	0%
Gnoien	18	10	56%	8	44%	6	60%	3	30%	1	10%	3	38%	4	50%	0	0%	1	13%	0	0%
Großen Luckow	0	0	0%	0	0%	0	0%	0	0%	0	0%	0	0%	0	0%	0	0%	0	0%	0	0%
Gülzow	6	5	83%	1	17%	0	0%	4	80%	1	20%	0	0%	1	100%	0	0%	0	0%	0	0%
Jürgenshagen	84	59	70%	25	30%	21	36%	17	29%	21	36%	15	60%	5	20%	4	16%	1	4%	0	0%
Kirch Rosin	21	12	57%	9	43%	3	25%	3	25%	6	50%	4	44%	3	33%	2	22%	0	0%	0	0%
Krakow am See	90	56	62%	34	38%	25	45%	14	25%	17	30%	12	35%	17	50%	3	9%	1	3%	1	3%
Laage	8	6	75%	2	25%	4	67%	0	0%	2	33%	1	50%	1	50%	0	0%	0	0%	0	0%
Langhagen	4	3	75%	1	25%	2	67%	1	33%	0	0%	1	100%	0	0%	0	0%	0	0%	0	0%
Lohmen	15	7	47%	8	53%	3	43%	3	43%	1	14%	3	38%	3	38%	1	13%	0	0%	1	13%
Lühburg	12	3	25%	9	75%	2	67%	1	33%	0	0%	1	11%	1	11%	4	44%	2	22%	1	11%
Matgendorf	14	10	71%	4	29%	3	30%	6	60%	1	10%	1	25%	1	25%	2	50%	0	0%	0	0%
Schlemmin	78	50	64%	28	36%	16	32%	19	38%	15	30%	13	46%	11	39%	3	11%	0	0%	1	4%
Teterow	4	1	25%	3	75%	1	100%	0	0%	0	0%	1	33%	0	0%	1	33%	1	33%	0	0%
Vierburg	7	5	71%	2	29%	4	80%	1	20%	0	0%	0	0%	1	50%	1	50%	0	0%	0	0%
Weitendorf	6	4	67%	2	33%	2	50%	1	25%	1	25%	0	0%	1	50%	0	0%	0	0%	1	50%
Summe Hegeringe	416	258	62%	158	38%	104	40%	83	32%	71	28%	61	39%	58	37%	23	15%	10	6%	6	4%
alle Forstämter	73	48	66%	25	34%	20	42%	11	23%	17	35%	9	36%	8	32%	6	24%	2	8%	0	0%
Altkreis DBR	135	73	54%	62	46%	31	42%	18	25%	24	33%	23	37%	20	32%	13	21%	1	2%	5	8%
Summe LRO	624	379	61%	245	39%	155	41%	112	30%	112	30%	93	38%	86	35%	42	17%	13	5%	11	4%
Soll %							45		15		40		45		25		15		5		10

Rotwildabschussentwicklung im Altkreis Güstrow

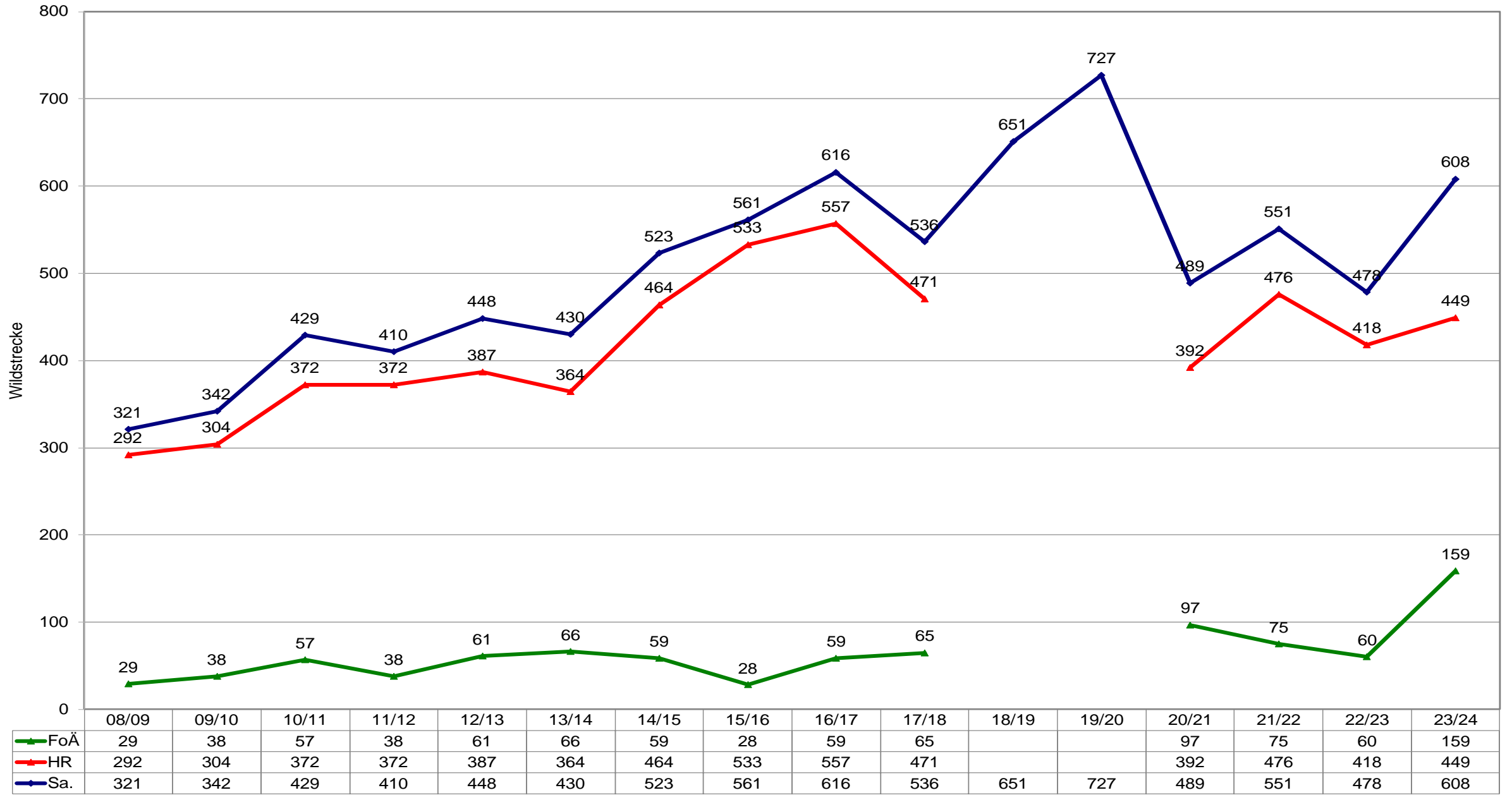


—●— FoÄ	50	76	62	46	63	50	45	69	51	59			52	33	198	73
—x— HR	318	332	359	390	502	316	440	500	463	444			462	476	418	416
—●— Summe	368	408	421	436	565	366	485	569	514	503	508	424	514	509	616	489

Damwild 2023/2024

Hegeringe des KJV Güstrow e.V.	gesamt					Altersklassen weiblich						Altersklassen männlich									
	gesamt	weiblich		männlich		0	% am Abschluss weibl.	I	% am Abschluss weibl.	II	% am Abschluss weibl.	0	% am Abschluss männl.	I	% am Abschluss männl.	II	% am Abschluss männl.	III	% am Abschluss männl.	IV	% am Abschluss männl.
	Summe	Summe weibl. Abschluss	% am ges. Absch.	Summe männl. Abschluss	% am ges. Absch.																
Baumgarten	9	6	67%	3	33%	3	50%	0	0%	3	50%	1	33%	1	33%	1	33%	0	0%	0	0%
Am Schmoocksberg	1	1	100%	0	0%	0	0%	1	100%	0	0%	0	0%	0	0%	0	0%	0	0%	0	0%
Gnoien	0	0	0%	0	0%	0	0%	0	0%	0	0%	0	0%	0	0%	0	0%	0	0%	0	0%
Großen Luckow	3	2	67%	1	33%	2	100%	0	0%	0	0%	0	0%	1	100%	0	0%	0	0%	0	0%
Gülzow	0	0	0%	0	0%	0	0%	0	0%	0	0%	0	0%	0	0%	0	0%	0	0%	0	0%
Jürgenshagen	0	0	0%	0	0%	0	0%	0	0%	0	0%	0	0%	0	0%	0	0%	0	0%	0	0%
Kirch Rosin	9	3	33%	6	67%	2	67%	0	0%	1	33%	1	17%	2	33%	2	33%	1	17%	0	0%
Krakow am See	275	213	77%	62	23%	96	45%	51	24%	66	31%	18	29%	29	47%	11	18%	2	3%	2	3%
Laage	48	33	69%	15	31%	15	45%	6	18%	12	36%	4	27%	6	40%	2	13%	1	7%	2	13%
Langhagen	2	0	0%	2	100%	0	0%	0	0%	0	0%	0	0%	1	50%	1	50%	0	0%	0	0%
Lohmen	6	0	0%	6	100%	0	0%	0	0%	0	0%	2	33%	4	67%	0	0%	0	0%	0	0%
Lühburg	12	8	67%	4	33%	3	38%	1	13%	4	50%	2	50%	0	0%	1	25%	0	0%	1	25%
Matgendorf	8	4	50%	4	50%	1	25%	1	25%	2	50%	1	25%	3	75%	0	0%	0	0%	0	0%
Schlemmin	5	2	40%	3	60%	1	50%	1	50%	0	0%	2	67%	1	33%	0	0%	0	0%	0	0%
Teterow	24	13	54%	11	46%	6	46%	3	23%	4	31%	4	36%	6	55%	1	9%	0	0%	0	0%
Vierburg	6	5	83%	1	17%	2	40%	1	20%	2	40%	0	0%	1	100%	0	0%	0	0%	0	0%
Weitendorf	3	1	33%	2	67%	1	100%	0	0%	0	0%	0	0%	2	100%	0	0%	0	0%	0	0%
Summe Hegeringe	411	291	71%	120	29%	132	45%	65	22%	94	32%	35	29%	57	48%	19	16%	4	3%	5	4%
alle Forstämter	159	97	61%	62	39%	40	41%	24	25%	33	34%	23	37%	29	47%	6	10%	3	5%	1	2%
Altkreis DBR	114	64	56%	50	44%	28	44%	16	25%	20	31%	17	34%	22	44%	3	6%	4	8%	4	8%
Summe LRO	684	452	66%	232	34%	200	44%	105	23%	147	33%	75	32%	108	47%	28	12%	11	5%	10	4%
Soll %							45		15		40		35		30		15		10		10

Damwildabschussentwicklung im Altkreis Güstrow

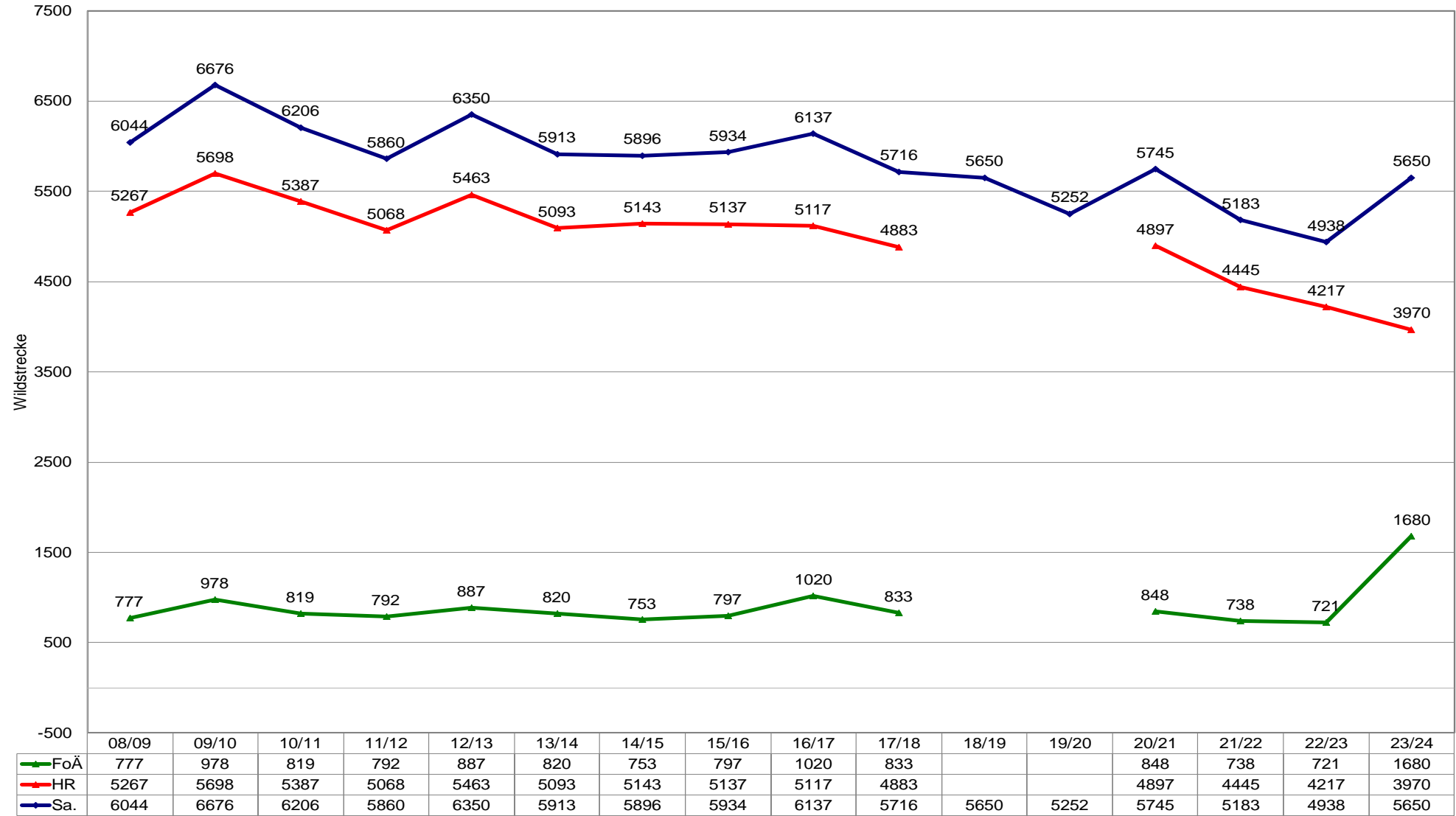


Achsentitel

Rehwild 2023/2024

Hegeringe des KJV Güstrow e.V.	gesamt					Altersklassen weiblich						Altersklassen männlich									
	gesamt	weiblich		männlich		0	% am Abschuss weibl.	I	% am Abschuss weibl.	II	% am Abschuss weibl.	0	% am Abschuss männl.	I	% am Abschuss männl.	II	% am Abschuss männl.	III	% am Abschuss männl.	IV	% am Abschuss männl.
	Summe	Summe weibl. Abschuss	% am ges. Absch.	Summe männl. Abschuss	% am ges. Absch.																
Baumgarten	116	49	42%	67	58%	14	29%	17	35%	18	37%	5	7%	20	30%	42	63%		0%		0%
Am Schmoosberg	212	97	46%	115	54%	24	25%	44	45%	29	30%	7	6%	44	38%	64	56%		0%		0%
Gnoiien	241	119	49%	122	51%	23	19%	59	50%	37	31%	17	14%	39	32%	66	54%		0%		0%
Großen Luckow	369	167	45%	202	55%	50	30%	62	37%	55	33%	42	21%	72	36%	88	44%		0%		0%
Gülzow	157	75	48%	82	52%	20	27%	27	36%	28	37%	16	20%	19	23%	47	57%		0%		0%
Jürgenshagen	130	62	48%	68	52%	17	27%	24	39%	21	34%	6	9%	19	28%	43	63%		0%		0%
Kirch Rosin	287	136	47%	151	53%	59	43%	36	26%	41	30%	15	10%	48	32%	88	58%		0%		0%
Krakow am See	402	209	52%	193	48%	63	30%	80	38%	66	32%	42	22%	71	37%	80	41%		0%		0%
Laage	235	125	53%	110	47%	50	40%	30	24%	45	36%	16	15%	40	36%	54	49%		0%		0%
Langhagen	254	117	46%	137	54%	30	26%	40	34%	47	40%	24	18%	40	29%	73	53%		0%		0%
Lohmen	224	99	44%	125	56%	42	42%	30	30%	27	27%	14	11%	45	36%	66	53%		0%		0%
Lühburg	289	146	51%	143	49%	36	25%	56	38%	54	37%	17	12%	40	28%	86	60%		0%		0%
Matgendorf	306	147	48%	159	52%	27	18%	74	50%	46	31%	12	8%	61	38%	86	54%		0%		0%
Schlemmin	110	62	56%	48	44%	15	24%	23	37%	24	39%	4	8%	12	25%	32	67%		0%		0%
Teterow	284	130	46%	154	54%	39	30%	38	29%	53	41%	18	12%	46	30%	90	58%		0%		0%
Vierburg	202	106	52%	96	48%	31	29%	40	38%	35	33%	9	9%	31	32%	56	58%		0%		0%
Weitendorf	152	66	43%	86	57%	13	20%	30	45%	23	35%	16	19%	31	36%	39	45%		0%		0%
Summe Hegeringe	3970	1912	48%	2058	52%	553	29%	710	37%	649	34%	280	14%	678	33%	1100	53%	0	0%	0	0%
alle Forstämter	1680	868	52%	812	48%	270	31%	237	27%	361	42%	162	20%	305	38%	345	42%		0%		0%
Altkreis DBR	2314	1101	48%	1213	52%	318	29%	406	37%	377	34%	161	13%	398	33%	654	54%	0	0%	0	0%
Summe LRO	7964	3881	49%	4083	51%	1141	29%	1353	35%	1387	36%	603	15%	1381	34%	2099	51%		0%		0%
Soll %									60		40				60		40				

Rehwildabschussentwicklung im Altkreis Güstrow



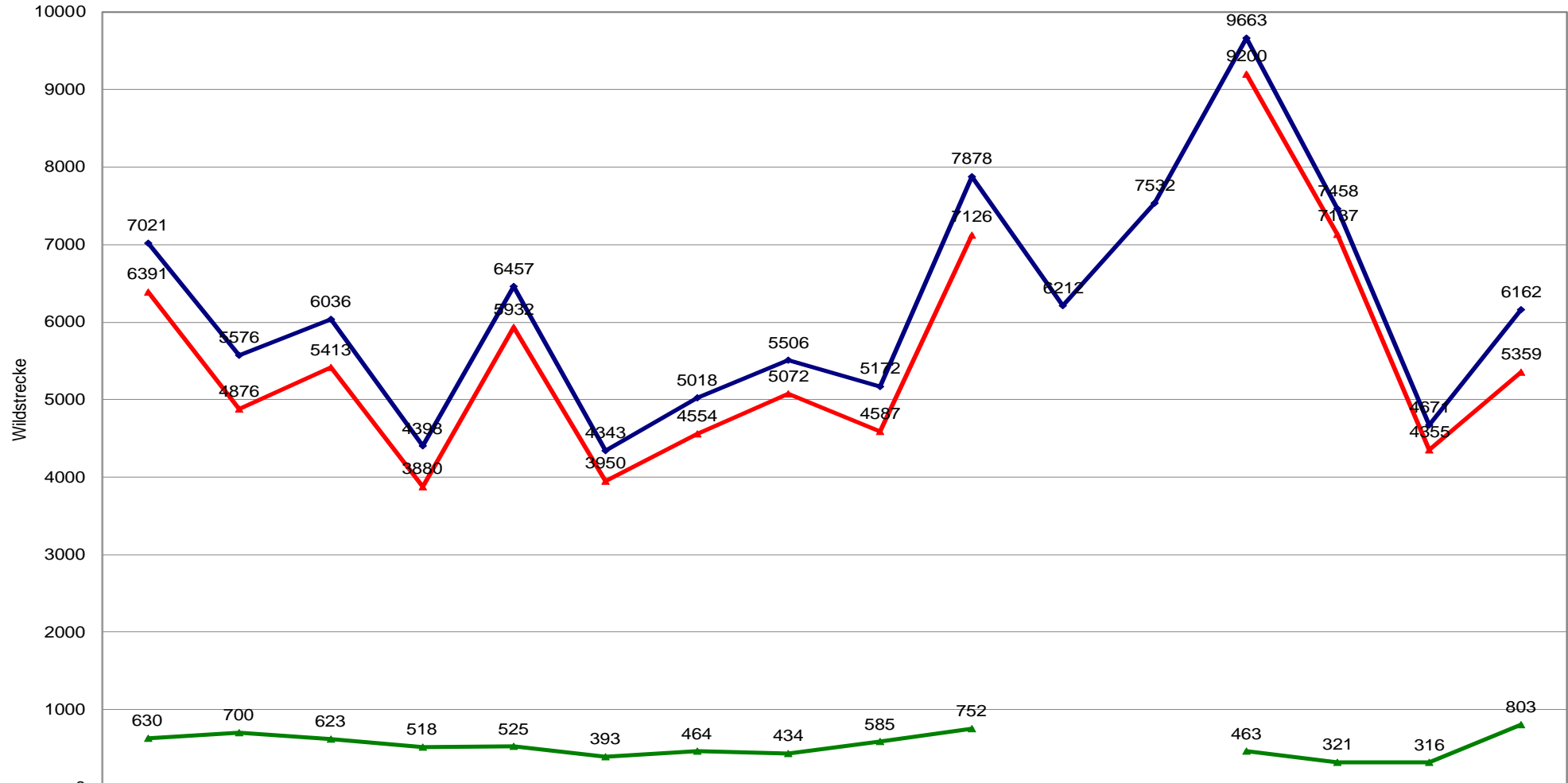
Entwicklung Abschuss Rehwild pro 100 Hektar

HGR/FOA	Jagdflächenentwicklung						Rehwild					
	1997/98	2005/06	2015/16	2021/2021	2022/2023	2023/2024	1997/98	2005/06	2017/18	2021/2022	2022/2023	2023/2024
Baumgarten	7.650	7.769	7.552	9.243	9.159	9.868	4,1	3,5	3,2	2,4	2,6	1,2
Am Schmooksberg	9.638	11.817	10.666	10.964	10.334	10.269	2,9	2,7	2,9	2,6	2,3	2,1
Gnoien	23.078	11.089	11.485	11.159	11.159	11.159	2,8	2,9	2,3	2,3	3,0	2,2
Großen Luckow	12.142	12.392	13.468	13.136	12.663	12.663	3,3	2,6	3,0	3,3	2,4	2,9
Gülzow	10.668	10.430	10.905	13.410	14.112	10.168	2,0	2,5	2,0	1,0	1,5	1,5
Jürgenshagen	6.485	6.583	6.665	6.629	6.629	6.834	2,5	2,4	2,0	1,5	1,9	1,9
Kirch Rosin	8.893	10.846	9.945	9.761	9.829	10.408	4,4	4,0	3,8	3,3	3,7	2,8
Krakow am See	10.328	15.572	15.429	14.691	14.691	14.483	3,6	2,7	2,8	2,6	2,8	2,8
Laage	10.372	10.605	10.550	10.811	10.935	10.924	2,9	2,5	3,0	2,7	2,6	2,2
Langhagen	6.328	7.584	6.795	6.333	6.371	6.541	2,9	1,7	2,9	3,7	3,8	3,9
Lohmen	6.174	7.628	7.561	9.537	9.507	9.707	2,7	2,3	2,9	2,1	2,3	2,3
Lühburg		13.552	13.171	13.086	13.015	13.015		2,7	2,6	2,3	2,4	2,2
Matgendorf	14.582	14.755	15.043	14.517	14.143	15.229	2,8	2,6	2,5	2,9	2,6	2,0
Schlemmin	5.388	5.525	5.561	6.543	6.307	6.180	3,2	3,1	3,1	3,1	3,5	1,8
Teterow	7.978	8.280	8.646	9.006	9.006	8.848	2,9	3,2	3,3	2,4	3,3	3,2
Vierburg	9.864	10.671	11.072	14.110	12.971	12.879	3,6	3,2	3,8	2,0	2,4	1,6
Weitendorf	7.552	7.517	7.979	7.813	7.873	7.742	2,3	2,9	2,5	2,4	2,1	2,0
Summe Hegeringe	157.120	172.615	172.493	183.556	183.556	176.915	3,0	2,7	2,8	2,4	2,5	2,2
alle Forstämter	27.053	16.148	14.696	13.772	13.148	19.722	3,1	5,6	5,7	5,4	5,5	8,5
Altkreis Güstrow	184.173	188.763	187.189	197.328	196.704	196.637	3,0	3,4	3,1	1,4	1,6	1,2

Schwarzwild 2023/2024

Hegeringe des KJV Güstrow e.V.	gesamt					Altersklassen weiblich						Altersklassen männlich									
	gesamt	weiblich		männlich																	
	Summe	Summe weibl. Abschuss	% am ges. Absch.	Summe männl. Abschuss	% am ges. Absch.	0	% am Abschuss weibl.	I	% am Abschuss weibl.	II	% am Gesamtab schuss	0	% am Abschuss männl.	I	% am Abschuss männl.	II	% am Abschuss männl.			AK 0+1 gesamt	% am Abschuss AK 0+1 gesamt
Baumgarten	344	157	46%	187	54%	87	55%	53	34%	17	5%	87	47%	76	41%	24	7%		0%	303	88%
Am Schmooksberg	365	149	41%	216	59%	84	56%	51	34%	14	4%	107	50%	87	40%	22	6%		0%	329	90%
Gnoiien	246	128	52%	118	48%	76	59%	41	32%	11	4%	58	49%	43	36%	17	7%		0%	218	89%
Großen Luckow	171	67	39%	104	61%	40	60%	21	31%	6	4%	52	50%	31	30%	21	12%		0%	144	84%
Gülzow	401	198	49%	203	51%	120	61%	70	35%	8	2%	101	50%	85	42%	17	4%		0%	376	94%
Jürgenshagen	167	65	39%	102	61%	37	57%	22	34%	6	4%	50	49%	40	39%	12	7%		0%	149	89%
Kirch Rosin	603	282	47%	321	53%	153	54%	108	38%	21	3%	163	51%	114	36%	44	7%		0%	538	89%
Krakow am See	618	270	44%	348	56%	141	52%	101	37%	28	5%	158	45%	149	43%	41	7%		0%	549	89%
Laage	215	96	45%	119	55%	57	59%	32	33%	7	3%	55	46%	41	34%	23	11%		0%	185	86%
Langhagen	140	59	42%	81	58%	28	47%	28	47%	3	2%	41	51%	23	28%	17	12%		0%	120	86%
Lohmen	455	205	45%	250	55%	124	60%	73	36%	8	2%	119	48%	109	44%	22	5%		0%	425	93%
Lühburg	377	173	46%	204	54%	106	61%	51	29%	16	4%	105	51%	69	34%	30	8%		0%	331	88%
Matgendorf	226	115	51%	111	49%	48	42%	52	45%	15	7%	50	45%	54	49%	7	3%		0%	204	90%
Schlemmin	144	71	49%	73	51%	40	56%	24	34%	7	5%	29	40%	33	45%	11	8%		0%	126	88%
Teterow	212	99	47%	113	53%	59	60%	32	32%	8	4%	50	44%	40	35%	23	11%		0%	181	85%
Vierburg	430	195	45%	235	55%	96	49%	76	39%	23	5%	114	49%	97	41%	24	6%		0%	383	89%
Weitendorf	245	126	51%	119	49%	78	62%	39	31%	9	4%	63	53%	41	34%	15	6%		0%	221	90%
Summe Hegeringe	5359	2455	46%	2904	54%	1374	56%	874	36%	207	4%	1402	48%	1132	39%	370	7%	0	0%	4782	89%
alle Forstämter	803	442	55%	361	45%	246	56%	126	29%	70	9%	208	58%	109	30%	44	5%		0%	689	86%
Altkreis DBR	3404	1601	47%	1803	53%	964	60%	500	31%	137	4%	949	53%	655	36%	199	6%	0	0%	3068	90%
Summe LRO	9566	4498	47%	5068	53%	2584	57%	1500	33%	414	4%	2559	50%	1896	37%	613	6%		0%	8539	89%
Soll %											min 10						max 5				min 80

Schwarzwildabschussentwicklung im Altkreis Güstrow

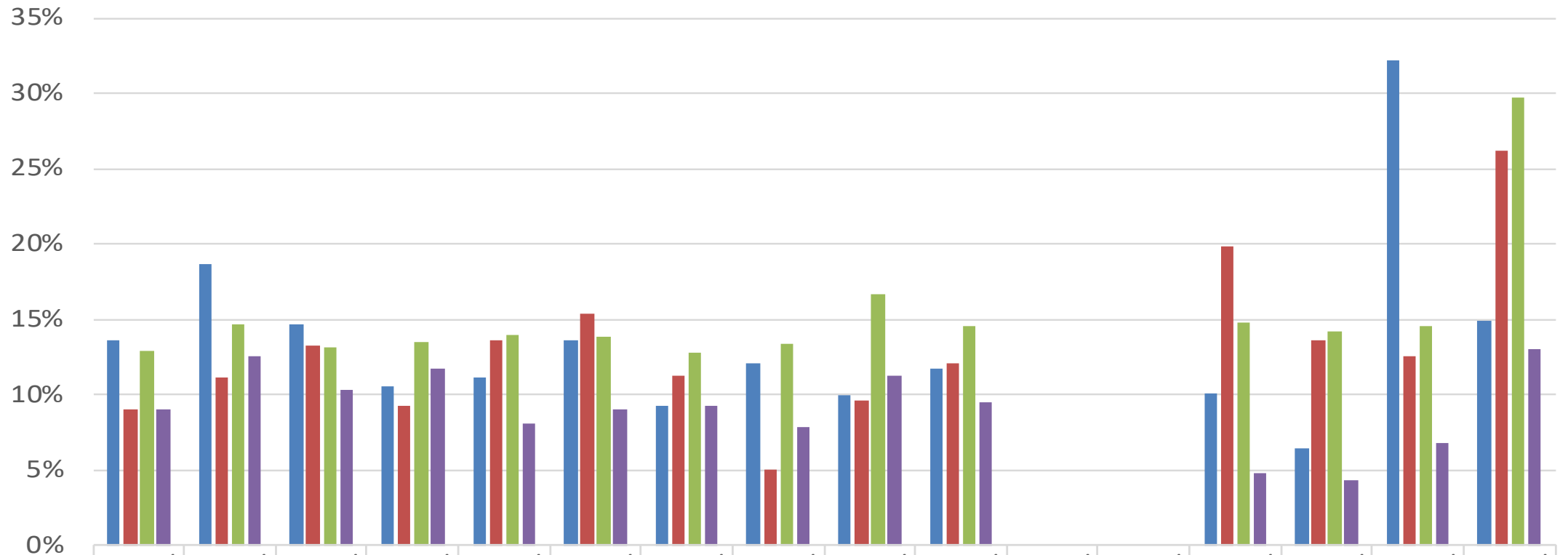


	08/09	09/10	10/11	11/12	12/13	13/14	14/15	15/16	16/17	17/18	18/19	19/20	20/21	21/22	22/23	23/24
FoÄ	630	700	623	518	525	393	464	434	585	752			463	321	316	803
HR	6391	4876	5413	3880	5932	3950	4554	5072	4587	7126			9200	7137	4355	5359
Sa.	7021	5576	6036	4398	6457	4343	5018	5506	5172	7878	6212	7532	9663	7458	4671	6162

Entwicklung Abschuss Schwarzwild pro 100 Hektar

HGR/FOA	Jagdflächenentwicklung						Schwarzwild					
	1997/98	2005/06	2015/16	2021/2021	2022/2023	2023/2024	1997/98	2005/06	2017/18	2021/2022	2022/2023	2023/2024
Baumgarten	7.650	7.769	7.552	9.243	9.159	9.868	2,8	3,0	4,9	4,6	3,0	3,5
Am Schmooksberg	9.638	11.817	10.666	10.964	10.334	10.269	2,2	2,2	4,1	4,0	2,0	3,6
Gnoien	23.078	11.089	11.485	11.159	11.159	11.159	1,4	1,1	3,0	2,8	3,8	2,2
Großen Luckow	12.142	12.392	13.468	13.136	12.663	12.663	2,8	1,4	4,1	2,4	1,0	1,4
Gülzow	10.668	10.430	10.905	13.410	14.112	10.168	1,1	2,1	3,1	3,3	2,2	3,9
Jürgenshagen	6.485	6.583	6.665	6.629	6.629	6.834	1,8	1,5	3,1	2,9	1,8	2,4
Kirch Rosin	8.893	10.846	9.945	9.761	9.829	10.408	5,0	4,6	7,4	5,1	4,3	5,8
Krakow am See	10.328	15.572	15.429	14.691	14.691	14.483	4,6	3,2	5,9	6,1	3,1	4,3
Laage	10.372	10.605	10.550	10.811	10.935	10.924	2,5	1,5	2,9	4,3	2,4	2,0
Langhagen	6.328	7.584	6.795	6.333	6.371	6.541	2,9	1,8	4,0	4,5	1,7	2,1
Lohmen	6.174	7.628	7.561	9.537	9.507	9.707	3,2	3,4	7,0	5,5	3,5	4,7
Lühburg		13.552	13.171	13.086	13.015	13.015		1,8	3,5	4,7	1,7	2,9
Matgendorf	14.582	14.755	15.043	14.517	14.143	15.229	0,9	0,8	2,3	3,1	1,9	1,5
Schlemmin	5.388	5.525	5.561	6.543	6.307	6.180	1,0	2,2	3,2	3,8	2,9	2,3
Teterow	7.978	8.280	8.646	9.006	9.006	8.848	2,4	2,0	3,4	2,8	1,5	2,4
Vierburg	9.864	10.671	11.072	14.110	12.971	12.879	1,5	2,0	4,2	3,3	2,8	3,3
Weitendorf	7.552	7.517	7.979	7.813	7.873	7.742	1,5	2,8	4,7	3,8	2,1	3,2
Summe Hegeringe	157.120	172.615	172.493	183.556	183.556	176.915	2,2	2,2	4,1	3,9	2,4	3,0
alle Forstämter	27.053	16.148	14.696	13.772	13.148	19.722	2,8	3,3	5,1	2,3	2,4	4,1
Altkreis Güstrow	184.173	188.763	187.189	197.328	196.704	196.637	2,3	2,3	4,2	2,2	1,5	1,7

Abschluss FoÄ am Gesamtabschluss



	2008/ 2009	2009/ 2010	2010/ 2011	2011/ 2012	2012/ 2013	2013/ 2014	2014/ 2015	2015/ 2016	2016/ 2017	2017/ 2018	2018/ 2019	2019/ 2020	2020/ 2021	2021/ 2022	2022/ 2023	2023/ 2024
Rotwild	14%	19%	15%	11%	11%	14%	9%	12%	10%	12%			10%	6%	32%	15%
Damwild	9%	11%	13%	9%	14%	15%	11%	5%	10%	12%			20%	14%	13%	26%
Rehwild	13%	15%	13%	14%	14%	14%	13%	13%	17%	15%			15%	14%	15%	30%
Schwarzwild	9%	13%	10%	12%	8%	9%	9%	8%	11%	10%			5%	4%	7%	13%

Rotwild Damwild Rehwild Schwarzwild